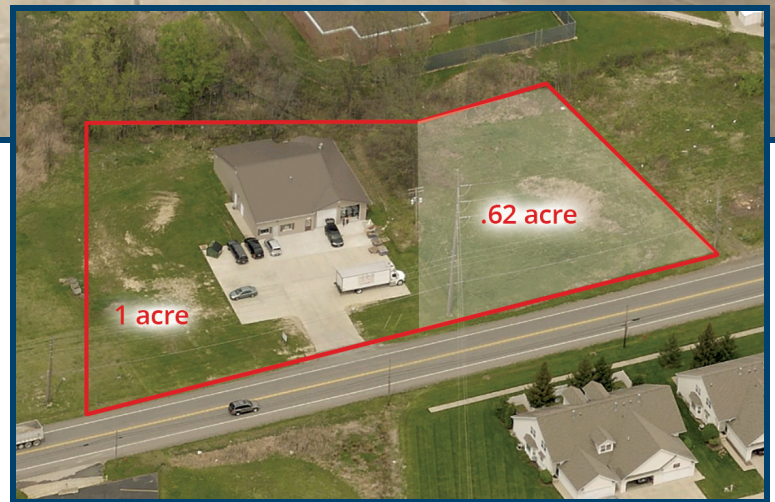




SALE PRICE: \$325,000

Property Highlights

Available SF:	3,701 SF
Office:	837 SF
Warehouse:	2,864 SF
Ceiling Height:	12'
Lease Rate:	\$2,750.00 /MO
Lot Size:	1.62 Acres
Year Built:	1957
Building Size:	3,701 SF
Renovated:	2011
Zoning:	I-1
Market:	Greater Medina
Submarket:	Medina
Parking Spaces	15
Price / SF:	\$87.81



LISTING AGENTS

MORGAN FAUNCE
Morgan@GerspacherGroup.com

SAM TECCA
Sam@GerspacherGroup.com

330.722.5002

GERSPACHER REAL ESTATE GROUP
5164 Normandy Park Drive, Suite 285
Medina, OH 44256

GerspacherGroup.com



PROPERTY OVERVIEW

901 Lafayette Road in Medina, Ohio is a 3,701 SF office/warehouse space for lease. The warehouse is 2,864 SF and the office space and restroom are 837 SF. Built in 1957 and completely remodeled in 2011. There are 2, 11x12 drive-in doors and the ceiling is 12'. Zoned Light Industrial and it has 240 volts, 200 amps, and 3 phase, 15 parking spaces. The total acreage is 1.62

LOCATION OVERVIEW

On Lafayette Road, 6 miles from I-71 and SR-18

DEMOGRAPHICS

	3 MILES	5 MILES	10 MILES
Total Households	11,537	21,818	54,212
Total Population	30,645	57,175	142,145
Average HH Income	\$71,629	\$78,457	\$78,954



